

bestmile
optimizing mobility



DUBAI WORLD CONGRESS
FOR SELF-DRIVING TRANSPORT
15 - 16 OCTOBER 2019

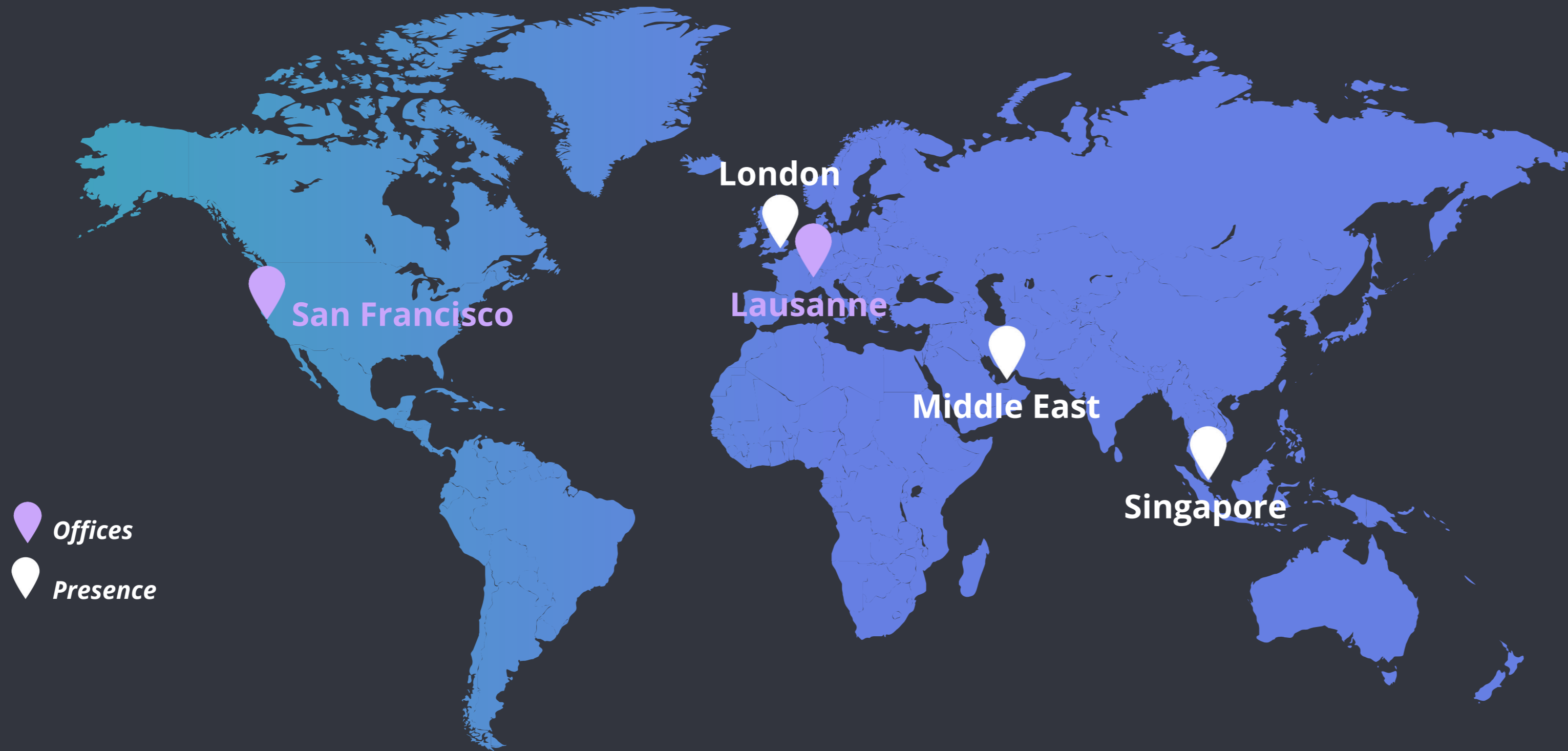
INTEGRATING AUTONOMOUS VEHICLES WITH PUBLIC TRANSPORT

A COLLECTIVE BRAIN FOR
DRIVERLESS FLEETS

bestmile.com | OCTOBER 15, 2019



COMPANY PROFILE



INCORPORATED IN 2014

with offices around the globe

15+ FLEETS

managed & growing in USA & Europe

60+ AMAZING PEOPLE

& rapidly growing

\$31M

in funding

OUR INVESTORS

b.

bluelagoon

 **TRANSLINK CAPITAL**



ROAD VENTURES

AIRBUS VENTURES

 **partech**

serena



GROUPE ADP

NYC
1900



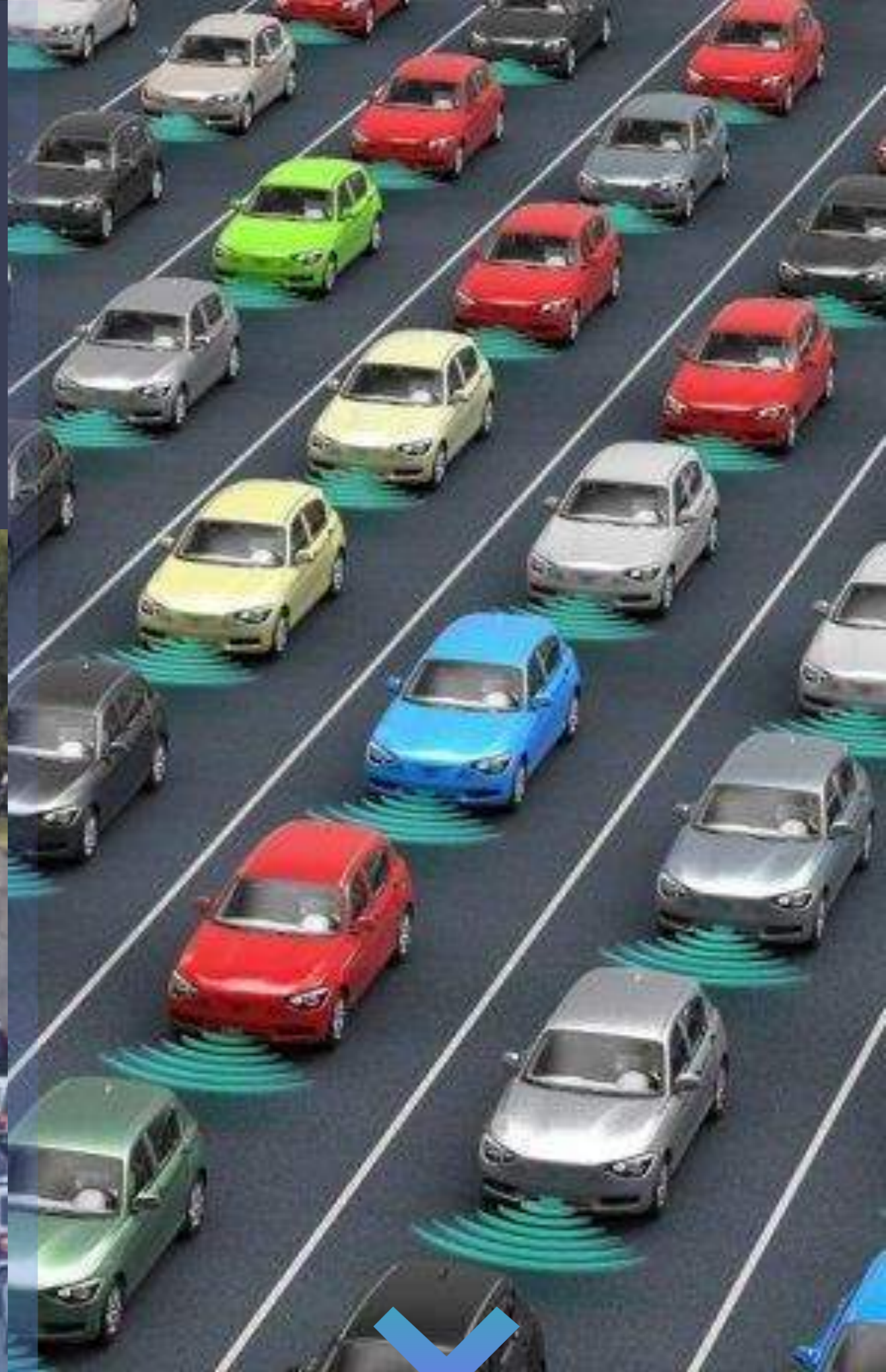
NYC
1913



EVERY
WHERE
TODAY

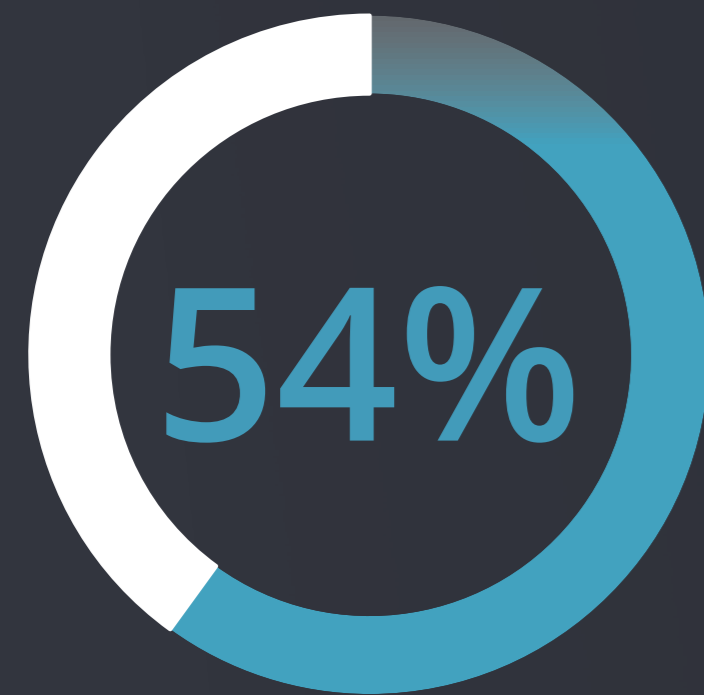


EVERY
WHERE
TOMORROW?

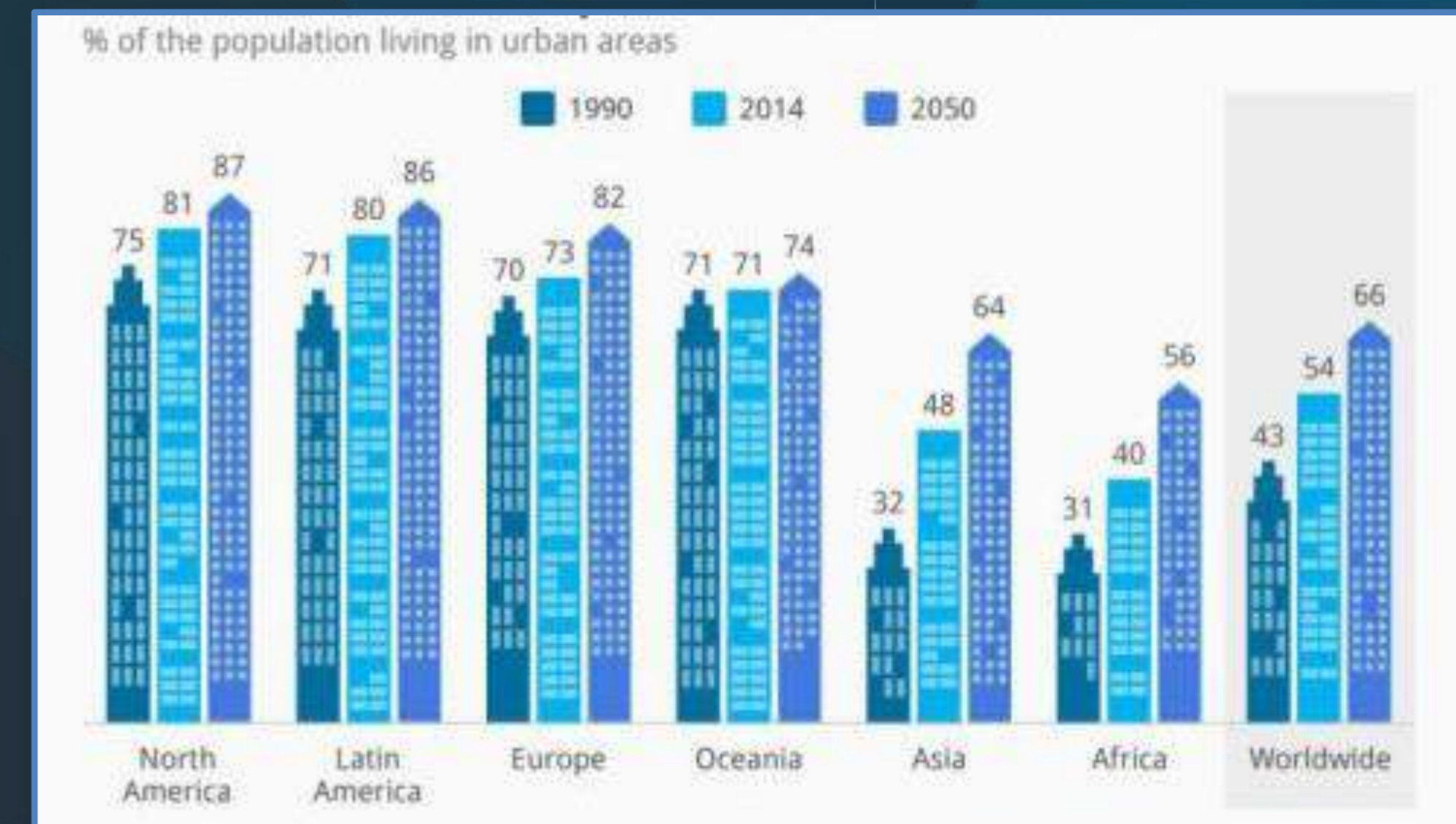


THE NEED FOR NEW MOBILITY SERVICES

AS POPULATIONS GROW, THE DEMAND FOR URBAN MOBILITY IS RAPIDLY INCREASING



More than 54% of the world's population now live in cities*



Global urbanization will cause huge challenges to mobility service providers and cities around the world, forcing them to find sustainable mobility solutions

*Source: Statista & United Nations

NEW MOBILITY SERVICES ARE GROWING

engadget

Mercedes' ridesharing service comes to London



The integration of micro-transit services with public transport enhances the quality of offerings, decreases the operating costs and widens service areas



TECHCRUNCH

BMW and Daimler agree to merge mobility service businesses

NBC NEWS

Arlington to End Bus Service, Replace with Rideshare App



OEMs are investing and forming partnerships to deliver mobility services and create new value streams

MASABI

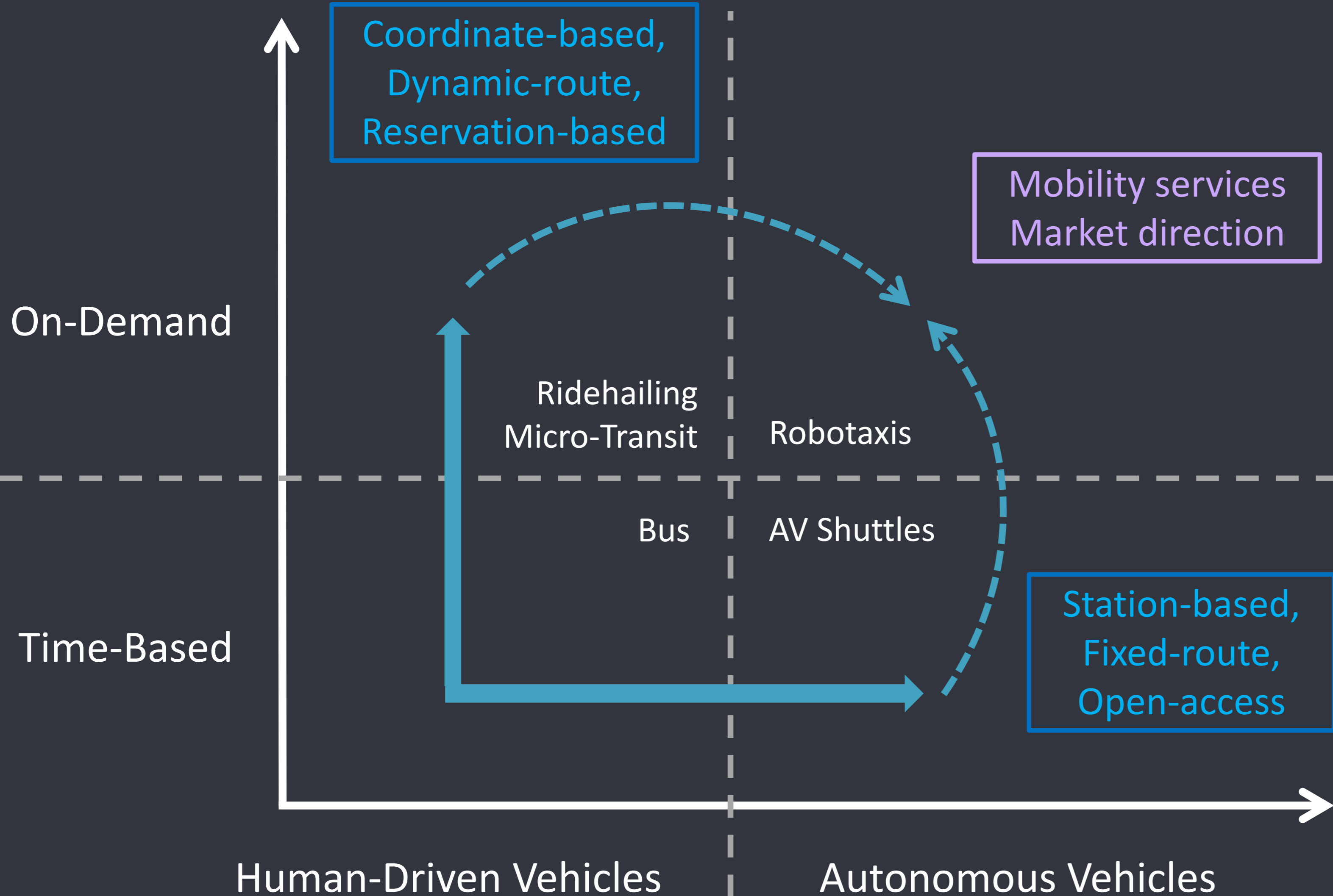
New mobility survey finds over 1/3 of Americans are combining public transit with ridesharing

AUTONOMOUS MOBILITY IS HAPPENING



THE LANDSCAPE	AUTONOMOUS SHUTTLE	AUTONOMOUS CAR	AUTONOMOUS BUS	AUTONOMOUS TRUCK
CAPACITY (PAX)	8	5	30 to 50	2
CARGO (CUBIC LITERS)	0	4	0	30
RANGE (KMS)	15	500	300	1000
MAX SPEED (KM/H)	25 - 40	250	150	120

THE 2 ROADS TO ROBOTAXI FLEETS



Bestmile is preparing the future of mobility by enabling the two possible roads to robotaxis

THE CHALLENGE FOR MOBILITY PROVIDERS

Mobility providers have to now develop both on-demand and time-based services that efficiently match supply and demand, and are fully integrated with autonomous vehicles

THESE SERVICES RELY ON THEIR ABILITY TO MANAGE



HYBRID FLEETS

(human-driven and autonomous vehicles)



MIXED FLEETS

(different brands of autonomous vehicles)

THE AUTONOMOUS SHUTTLE

- ✓ First and last mile
- ✓ “Driverless” operation
- ✓ Lower operating cost
- ✓ Zero pollution
- ✓ Fits well in narrow cities
- ✓ Friendly for disabled and elderly passengers





THE AUTONOMOUS PROMISE

THE AUTONOMOUS PROMISE...

NAVYA®



GAUSSIN
MANUGISTIQUE®



2get³there



EASY
MILE



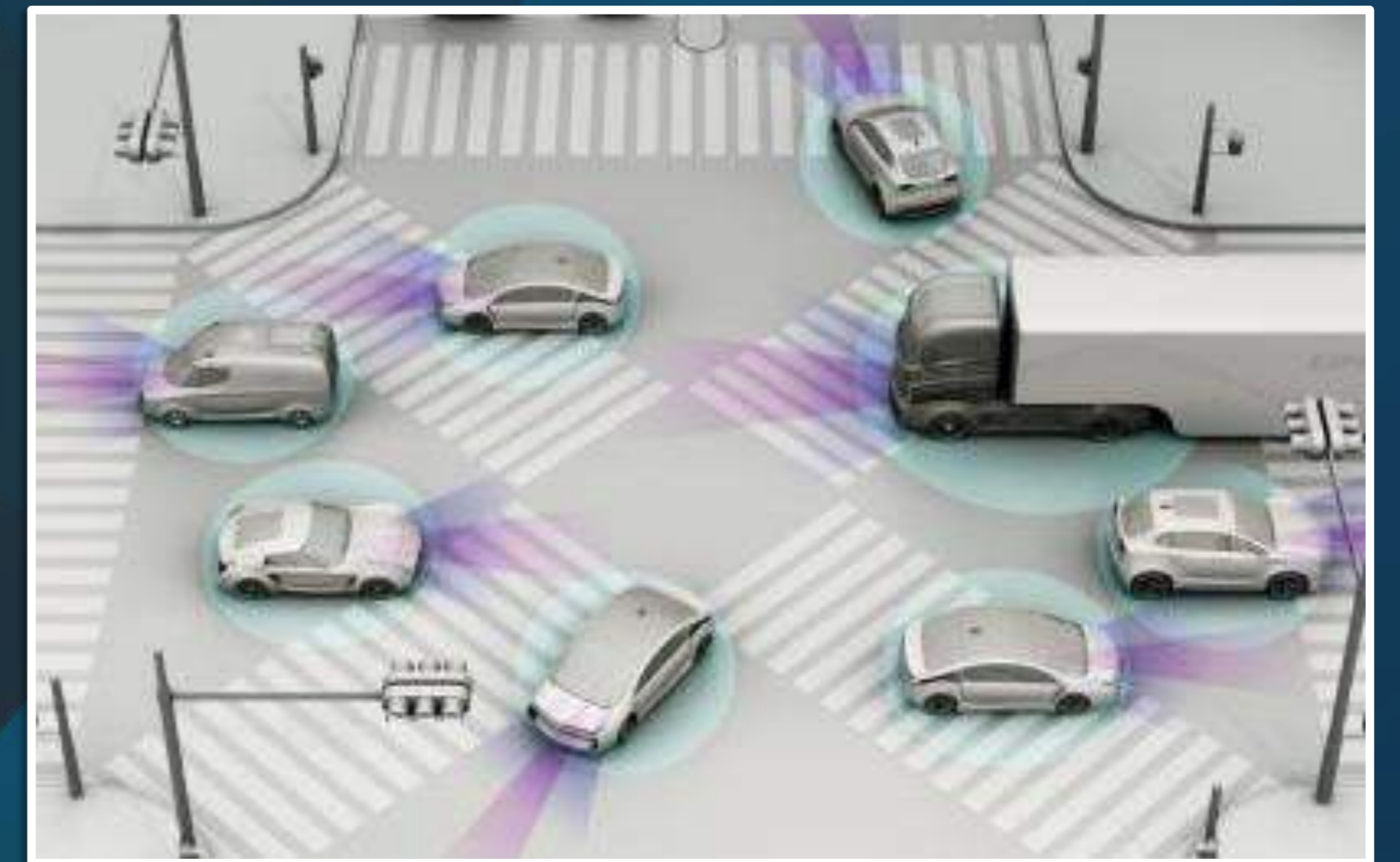
bestmile

THE TRUTH IS...



...AND ALONE THEY DON'T MAKE FOR
A TRANSPORTATION SYSTEM!

AUTONOMOUS VEHICLES
ARE NOT *FULLY* AUTONOMOUS JUST YET...





HOW TO ENABLE THE PROMISE?



CONTROL TOWER FOR VEHICLES

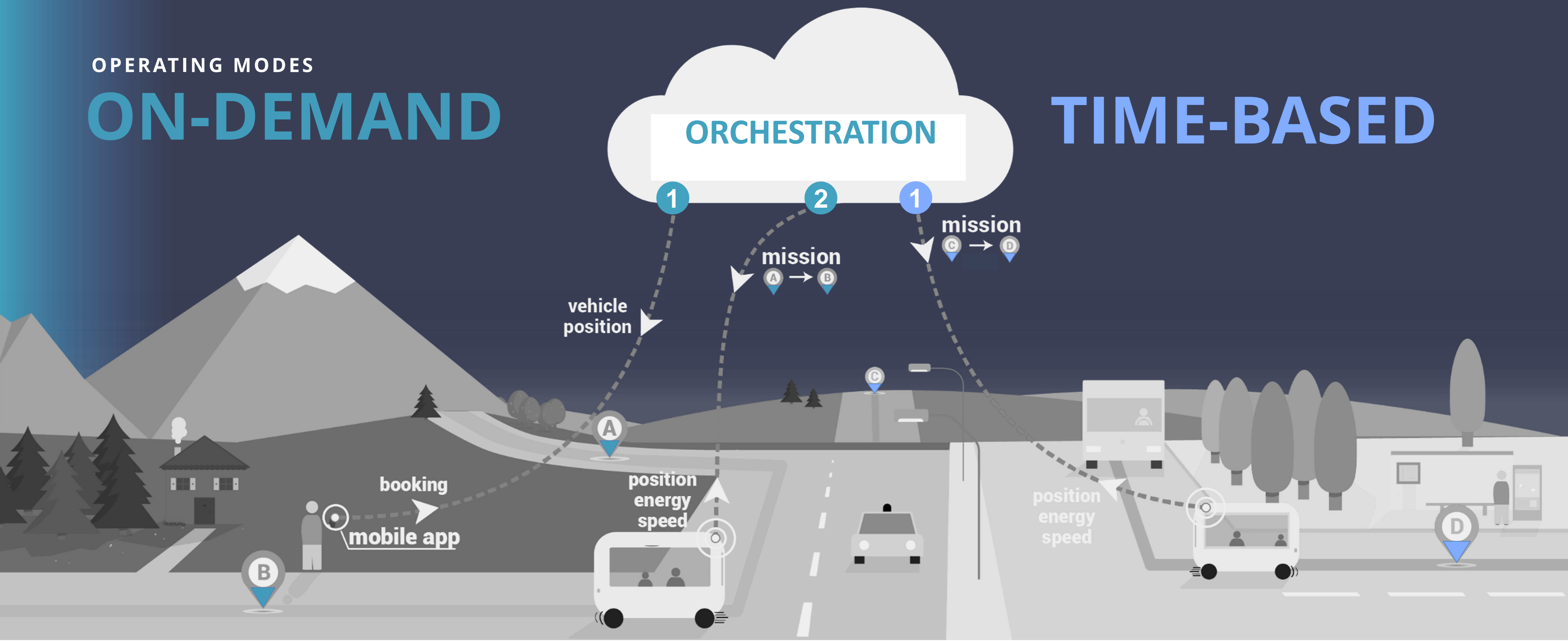


TO SEND
THE RIGHT MISSION
TO THE RIGHT VEHICLE
AT THE RIGHT TIME

OPERATING MODES

ON-DEMAND

TIME-BASED



**TO SEND THE RIGHT MISSION
TO THE RIGHT VEHICLE AT THE RIGHT TIME**

BESTMILE FLEET ORCHESTRATION SOLUTION



The background features a dark, silhouetted city skyline at dusk or dawn, with a body of water in the foreground. Overlaid on this is a complex network of glowing blue lines and circular nodes. Some nodes contain icons: a cloud, a smartphone, a Wi-Fi signal, a truck, a bicycle, and a coffee cup. The overall aesthetic is futuristic and technological.

AUTONOMOUS FLEET INTEGRATION WITH PUBLIC TRANSPORT SYSTEMS?

AUTONOMOUS FLEET INTEGRATION WITH PT

Because a first and last mile service for PT makes sense **if and only if** the fleet is synchronized with the mass-transit system!



**On-demand
Door-to-door
System**



**Timetabled
Fixed-Line
System**

FLEET INTEGRATION WITH PT





FLEET INTEGRATION IN ACTION

**PUBLIC TRANSPORT OF FRIBOURG
MARLY INNOVATION CENTER**

TPF-MIC: THE PROJECT



Transport of Fribourg
FRIBOURG, SWITZERLAND

Navya shuttles

Connecting Fribourg to
Marly Innovation Center

Since Sept. 2017
Connected to bus line #1

MARLY INNOVATION CENTER (MIC)



TPF-MIC: THE SHUTTLE



Transport of Fribourg
FRIBOURG, SWITZERLAND

Navya shuttles

Connecting Fribourg to
Marly Innovation Center

Since Sept. 2017
Connected to bus line #1



TPF-MIC: THE SERVICE



Transport of Fribourg
FRIBOURG, SWITZERLAND

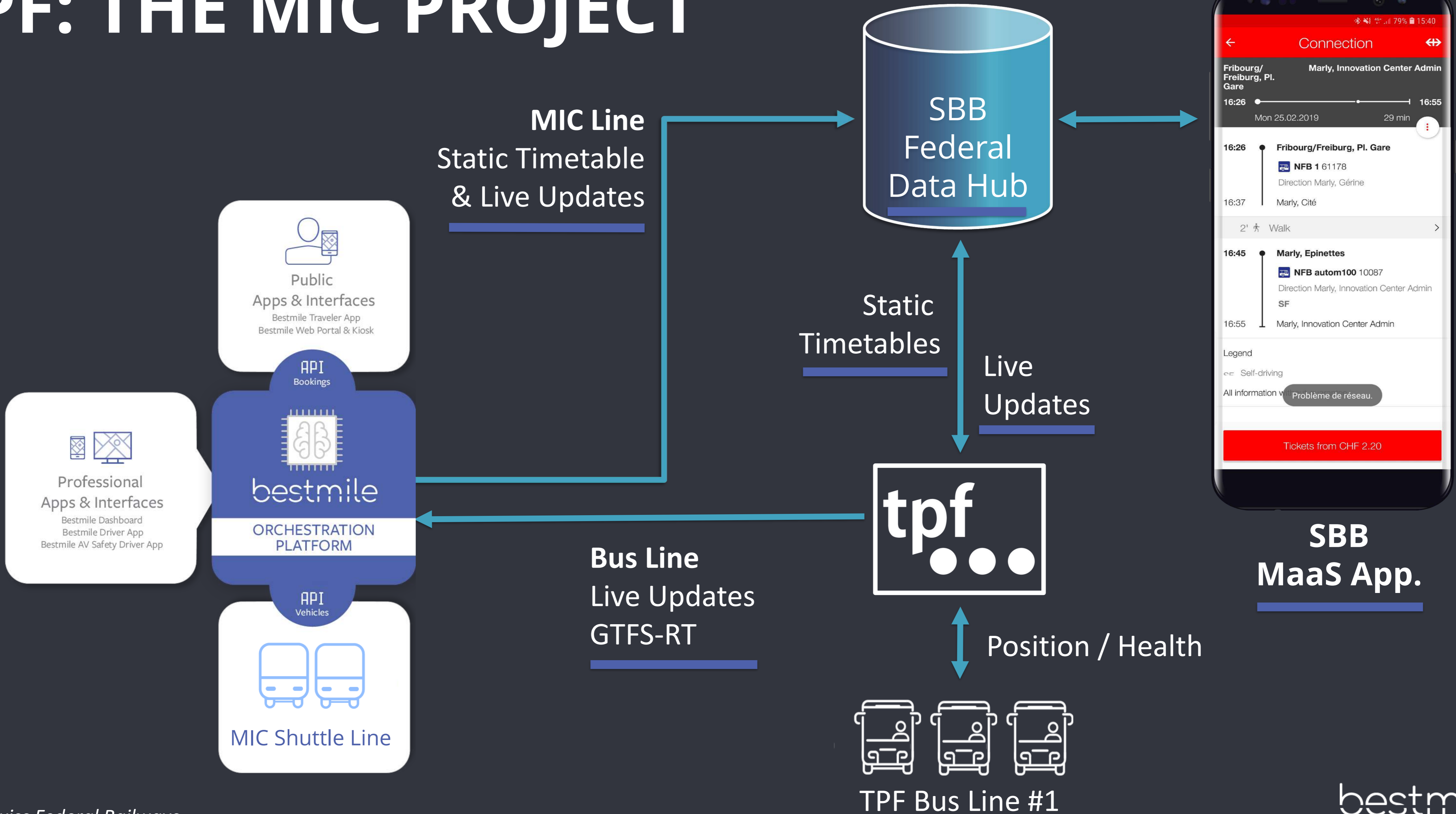
Navya shuttles

Connecting Fribourg to
Marly Innovation Center

Since Sept. 2017
Connected to bus line #1



TPF: THE MIC PROJECT



SBB = Swiss Federal Railways



INTEGRATION, INTEGRATION AND...MORE INTEGRATION

AN INTEGRATED SOLUTION IS NEEDED

TO DEPLOY, OPERATE AND SCALE INNOVATIVE TRANSPORTATION SERVICES



bestmile



**SMART
MOBILITY
SERVICES**



Fleets mixing
autonomous and
human-driven
vehicles

Vehicle agnostic
platform with real-time
orchestration
and optimization

- ✓ On-demand
- ✓ Time-based
- ✓ Shared and individual rides
- ✓ Smart delivery
- ✓ Smart logistics

bestmile

DESIGN & OPERATE WITH THE SAME PLATFORM

1 DESIGN



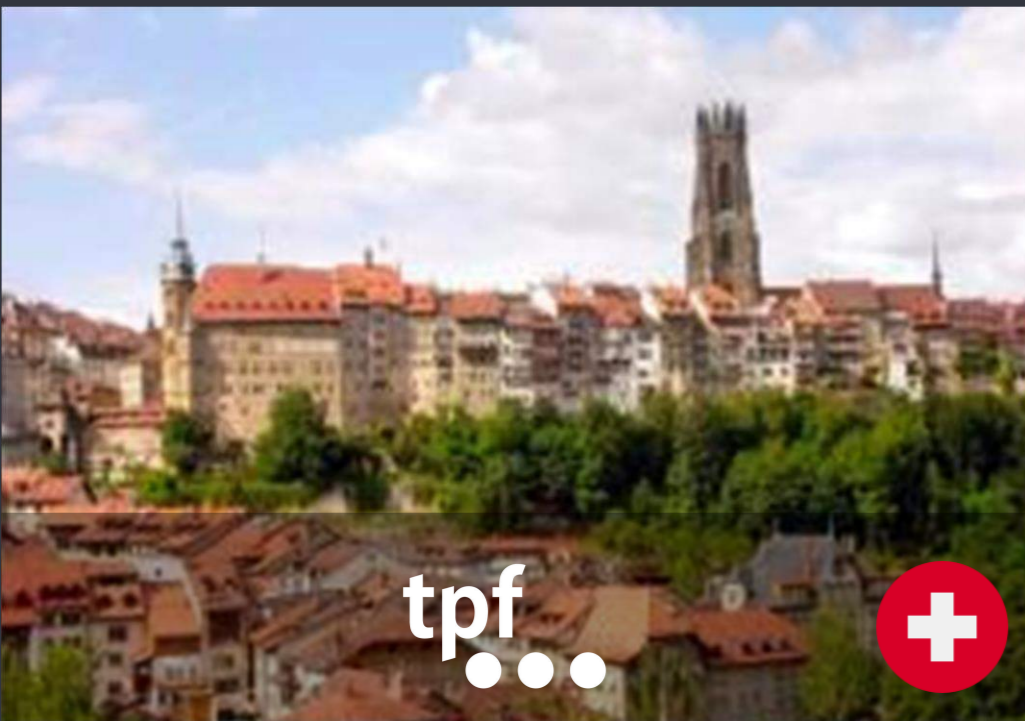
2 DEPLOY



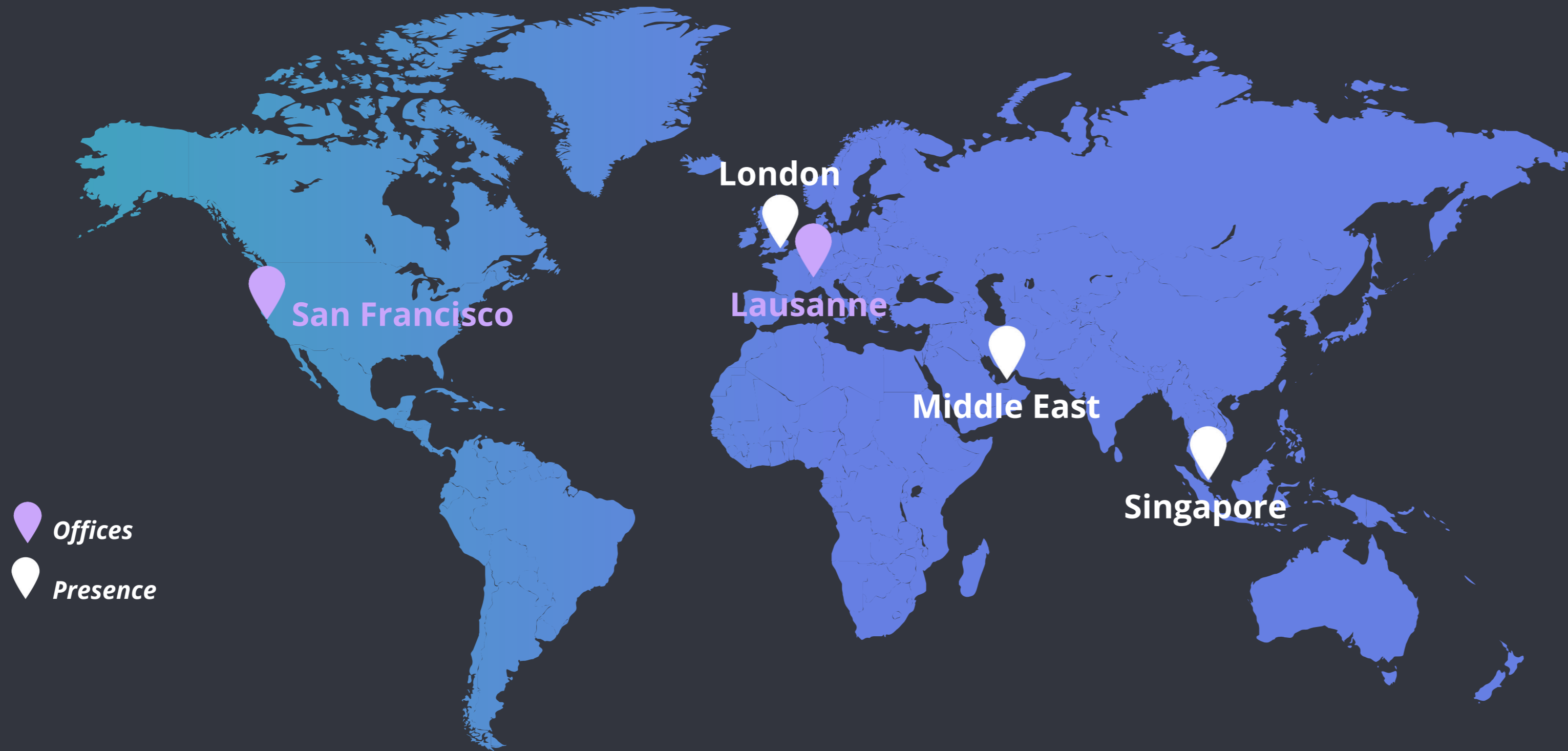
3 MANAGE



ORCHESTRATION TO ENABLE AV SERVICES



COMPANY PROFILE



INCORPORATED IN 2014

with offices around the globe

15+ FLEETS

managed & growing in USA & Europe

60+ AMAZING PEOPLE

& rapidly growing

\$31M

in funding

OUR INVESTORS

b.

bluelagoon

 **TRANSLINK CAPITAL**



ROAD VENTURES

AIRBUS VENTURES

 **partech**

serena



GROUPE ADP

bestmile

optimizing mobility



535 Mission St
14th Floor
San Francisco, CA 94105 USA



Avenue de Rhodanie 58
1007 Lausanne, Switzerland

gary.patterson@bestmile.com

bestmile.com

